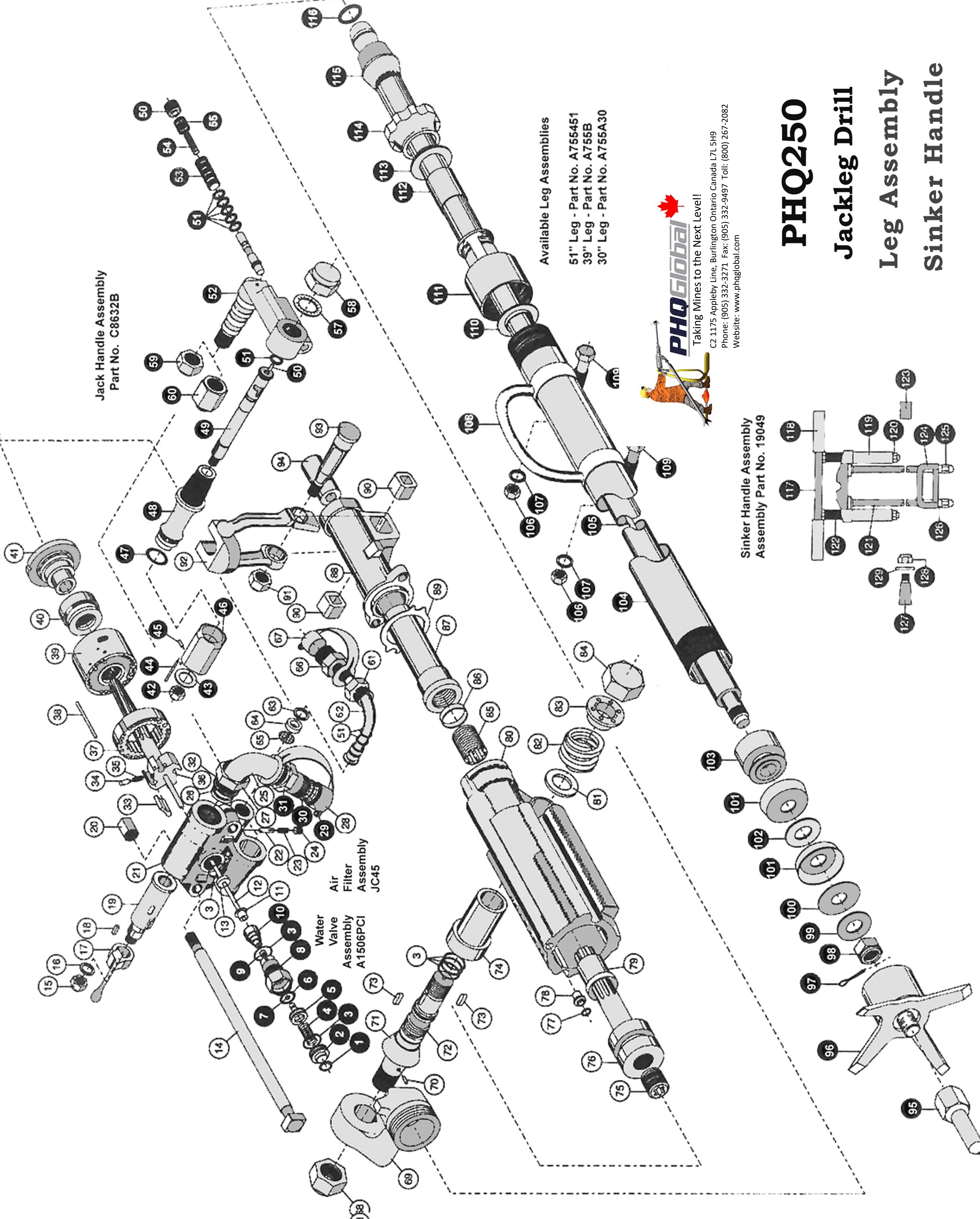


Jack Handle Assembly
Part No. C8632B



Available Leg Assemblies

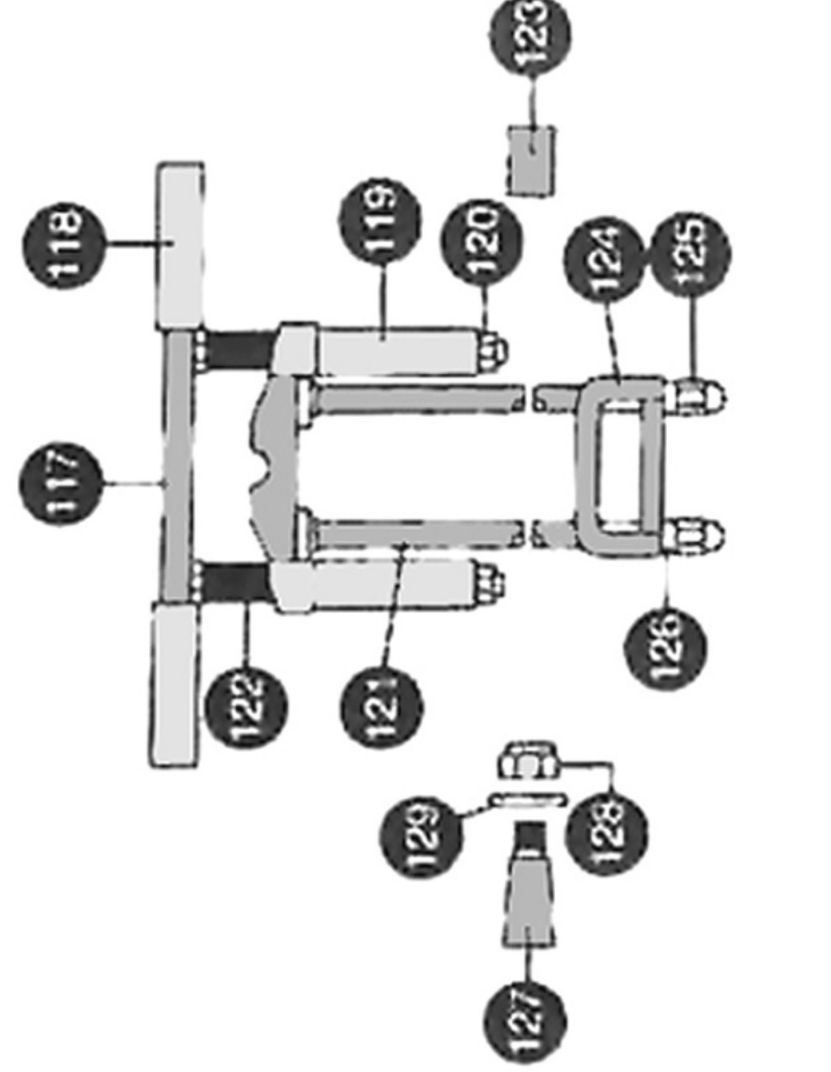
- 51" Leg - Part No. A755451
- 39" Leg - Part No. A755B
- 30" Leg - Part No. A755A30



Taking Mines to the Next Level!

C2 1175 Appleby Line, Burlington Ontario Canada L7L 5H9
Phone: (905) 332-3271 Fax: (905) 332-9497 Toll: (800) 267-2082
Website: www.phqglobal.com

Sinker Handle Assembly
Assembly Part No. 19049



PHQ250

Jackleg Drill

Leg Assembly

Sinker Handle

PHQ250 Jackleg

1	20015	1	Circlip (20014)
2	C1521PC1	1	Water Valve Spring Cap
3	164231	6	O-Ring
4	D1406	1	Water Valve Spring
5	C1522PC1	1	Water Valve
6	164521	1	O-Ring
7	164301	1	O-Ring
8	B1181PC4	1	Water Control Valve Body
9	D1673	1	Water Valve Seat
10	C2144	1	Water Valve Seat Retainer
11	D1674	1	Water Tube Spacer
12	C1574A	1	Water Tube - Swaged
13	D1675	1	Water Tube Seal
14	C1572C	2	Side Rod
15	D1385	1	Throttle Valve Handle Nut
16	149163MT	1	Disc Spring
17	C1509	1	Throttle Valve Handle
18	D1384	1	Throttle Valve Key
19	B1176	1	Throttle Valve
20	D1388	2	Side Rod Nut
21	A660	1	Backhead
22	D1383	1	Throttle Valve Plunger
23	D1382	1	Throttle Valve Plunger Spring
24	2422P	1	Plug
25	C1525N	1	Air Bend
26	D1601	1	Air Bend Copper Washer
27	C1526	1	Air Bend Nut
28	C1811A	1	Air Line Cap
29	355538A	1	Air Inlet Screen
30	164999	1	O-Ring
31	1356588	1	Hose Spud
32	164731	1	O-Ring
33	D6177	4	Ratchet Pawl (Reversible)
34	S2134	4	Pawl Plunger
35	D1611C	4	Pawl Plunger Spring
36	B1173B	1	Rifle Bar (Reversible)
37	B1170	1	Ratchet Ring (35 Teeth, standard)
38	S2128	1	Valve Box Pin (SD1397)
39	A745	1	Valve Box
40	C1648	1	Valve
41	A744	1	Valve Plug
42	1218UF	1	Spindle Nut
43	149122MT	1	Disc Spring
44	300822	2	Sellok Pin (Long)
45	30088	2	Sellok Pin (Short)
46	C1518	1	Twist Grip
47	164631	1	Friction Ring
48	B1180B	1	Control Body (Taper Fit)
48A	B1180	1	Control Body (Straight Fit)
49	B1183B	1	Control Spindle (Taper Fit)
49A	B1183	1	Control Spindle (Straight Fit)
50	1125NF02	1	Spindle Plug
51	164811	8	O-Ring
52	A697B	1	Operating Handle (Taper Fit)
52A	A697	1	Operating Handle (Straight Fit)
53	C151415	1	Retract Valve Assembly
54	D1424	1	Plunger Spring
55	D1425	1	Sleeve Spring
56	D1427	1	Plunger Plug
57	145M30	1	Operating Handle Washer
58	D8247	1	Operating Handle Nut
59	D1454	1	Operating Handle Adapter Nut (Nylock)
60	D1454D	1	Operating Handle Adapter Nut
61	S2141	1	Water Stem Nut
62	C1809	1	Water Stem - Threaded Type
63	S2487	1	Water Stem Thrust Washer
64	D1402	1	Water Inlet Washer Rubber
65	C1272	1	Water Inlet Screen
66	D2441	1	Water Inlet Adapter Spud
67	C1811W	1	Water Stem Cap
68	D1982	1	Clevis Body Spindle Nut
69	A693A	1	Clevis Body

70	30066	1	Spindle Locating Pin (D2546)
71	D1398	1	Clevis Body Spindle Cone
72	B1182A	1	Clevis Body Spindle
73	D1426	2	Lock Washer Key
74	C1523	1	Cylinder Lug Bushing
75	C1508	1	Rifle Nut
76	B2334	1	Piston
77	164311	1	O-Ring
78	D1390	1	Cylinder Ferrule
79	C1517	1	Front Cylinder Washer Liner
80	E393M	1	Cylinder - Muffled
80A	E393	(1)	Cylinder - Standard
81	D1392	1	Spindle Thrust Washer
82	C1571	1	Spindle Spring
83	C1519	1	Spindle Lock Washer
84	C1527	1	Spindle Nut
85	C1512	1	Chuck Nut
86	C1516	1	Chuck Nut Spacer
87	B1178	1	Chuck
88	A2598A	1	Fronthead
89	NB500P	1	Fronthead Gasket (Plastic)
89A	NB500C	(1)	Fronthead Gasket (Copper)
90	D6205	2	Steel Retainer Pin Bushing
91	12812UF	1	Steel Retainer Pin Nut (D1932)
92	A2599	1	Steel Retainer
93	C6908	1	Steel Retainer Pin
94	C1418A	1	Chuck Insert (7/8" Hex.)

Leg Assembly 51"= A755451 39"= A755B 30"= A755A30

95	C1672	1	Bottom Cap Spike (Standard)
96	C1791	1	Bottom Cap - 4 Prong
97	225414	1	Split Pin
98	D1073A	1	Piston Rod Lock Nut
99	D2038	1	Piston Rod Lock Washer
100	D1439A	1	Bucket Spacer - Lower
101	1796740	2	Bucket
102	D1438A	1	Piston Rod Spacer
103	D1515A	1	Bucket Spacer - Upper
104	C1788A	1	Cylinder - 51" Stroke
104A	C1790A	(1)	Cylinder - 39" Stroke
104B	C3519	(1)	Cylinder - 30" Stroke
105	B1851RK	1	Nylon Tubing c/w Ferrules and O Rings (2)
106	1216W	2	Nut
107	143M10	2	Washer
108	B1308	1	Carrying Handle c/w Bolts and Nuts
109	1026W12	2	Bolt
110	1973854A	1	Hat Packing (Double Lip)
111	B1287	1	Top Cap
112	D1069	1	Top Cap Bushing
113	1973854	1	Hat Packing
114	C1520	1	Adapter Nut
115	B1851A	1	Piston Rod - 51" Stroke
115A	B1849	(1)	Piston Rod - 39" Stroke
115B	B3004	(1)	Piston Rod - 30" Stroke
116	164531	1	O-Ring

Sinker Handle Assembly Part No. 19049

117	B3352	1	Tee Handle c/w Nuts
118	S2120	2	Tee Handle Grip
119	C3844	1	Tee Handle Guide
120	B3263	2	Tee Handle Nylock Nuts (12812UF)
121	C1582C	2	Side Rod
122	D2584	2	Tee Handle Springs
123	C1940	1	Cylinder Lug Bushing
124	B1729	1	Stirrup Handle
125	D1388D	2	Side Rod Nuts
126	D2154	2	Side Rod Nut Wahser
127	C1939	1	Backhead Lug Bushing
128	D1454	1	Nut
129	D1453	1	Washer